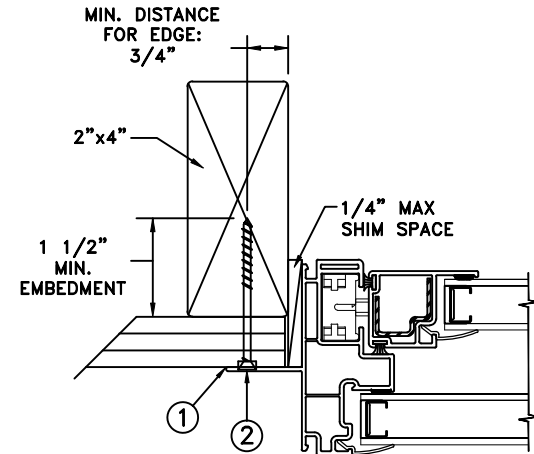


NAILFIN INSTALLATION



MAXIMUM FRAME	DP	IMPACT
84 x 57	+50/-50	NO

Installation Notes:

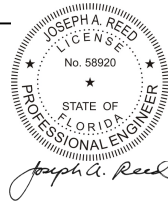
1. Seal flange/frame to substrate.
2. Use #8 PH or greater fastener though the nail fin with sufficient length to penetrate a minimum of 1 1/2" into the wood framing. For two (2X) wood frame substrate (min. S.G. = 0.42).
3. Host structure (wood buck, masonry, steel) to be designed and anchored to properly transfer all loads to the structure. The host structure is the responsibility of the architect or engineer of record for the project of installation.

General Notes:

1. The product shown herein is designed, tested and manufactured to comply with the wind load criteria of the adopted International Building Code (IBC), the International Residential Code (IRC), the Florida Building Code (FBC) and the industry requirement for the stated conditions.
2. All glazing shall conform to ASTM E1300.
3. At minimum, glazing shall be single strength annealed insulating glass.
4. Use structural or composite shims where required.
5. Maximum sizes are buck sizes and do not include fin or flange.

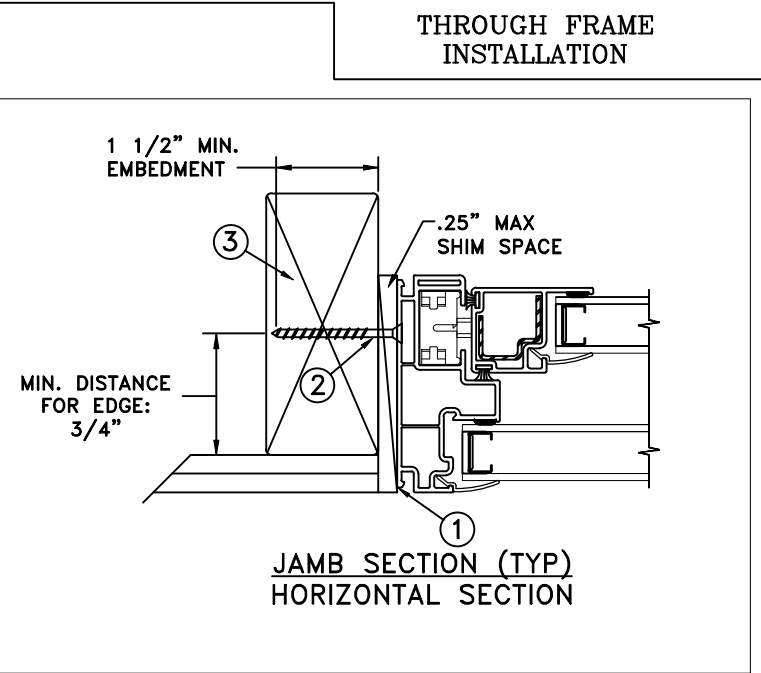
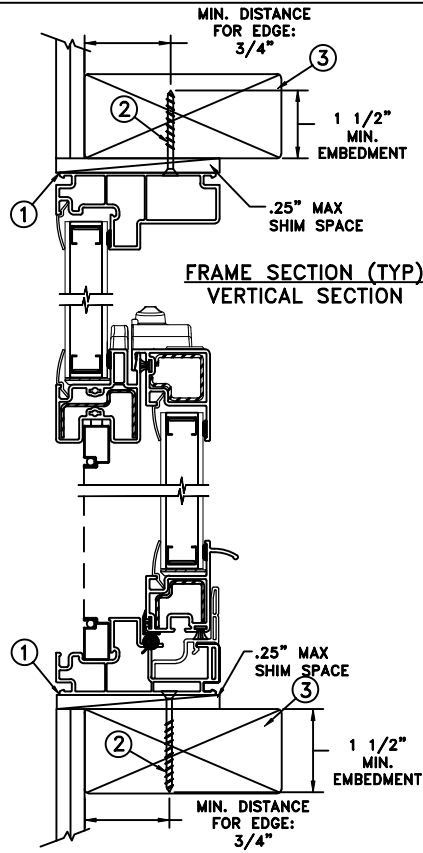
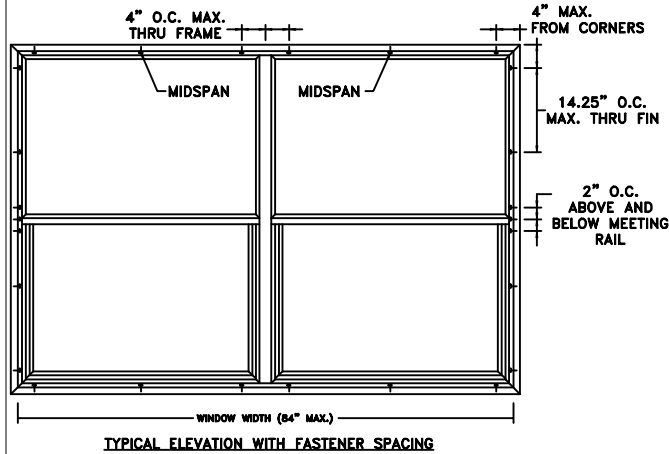
This schedule addresses only the fasteners required to anchor the unit to achieve the rated design pressure and impact performance (where applicable) up to the size limitations noted. It is not intended as a guide to the installation process and does not address the sealing consideration that may arise in different wall conditions. For the complete installation procedure, see the instructions packaged with the unit or go to www.jeld-wen.com.

DISCLAIMER:
This drawing and its contents are confidential and are not to be reproduced or copied in whole or in part or used or disclosed to others except as authorized by JELD-WEN Inc.



2021.02.03 08:15:29 -05'00'
JOSEPH A. REED, P.E.
Florida PE 58920, REG. No. 33474
National Certified Testing Laboratories
5 Leigh Drive, York, PA. 17406
(717) 846-1200

DATE: 01/21/21	<p>3737 LAKEPORT BLVD. KLAMATH FALLS OR, 97601 PHONE: (800) 535-3936</p>		
DRAWN BY: T. BROOKS		SCALE: NTS	
CHECKED BY: J. GOOSEN		TITLE: Builders Vinyl Tilt Single Hung Two Wide	
APPROVED BY: J. GOOSEN			
RECORD No.: D008450			
REPORT No.: SJW2012-184/185	CAD DWG. No.: ---	REV: A	SHEET 1 of 4



MAXIMUM FRAME	DP	IMPACT
84 x 57	+50/-50	NO

Installation Notes:

1. Seal flange/frame to substrate.
2. Use #8 PH or greater fastener though the nail fin with sufficient length to penetrate a minimum of 1 1/2" into the wood framing. For two (2X) wood frame substrate (min. S.G. = 0.42).
3. Host structure (wood buck, masonry, steel) to be designed and anchored to properly transfer all loads to the structure. The host structure is the responsibility of the architect or engineer of record for the project of installation.

General Notes:

1. The product shown herein is designed, tested and manufactured to comply with the wind load criteria of the adopted International Building Code (IBC), the International Residential Code (IRC), the Florida Building Code (FBC) and the industry requirement for the stated conditions.
2. All glazing shall conform to ASTM E1300.
3. At minimum, glazing shall be single strength annealed insulating glass.
4. Use structural or composite shims where required.
5. Maximum sizes are buck sizes and do not include fin or flange.

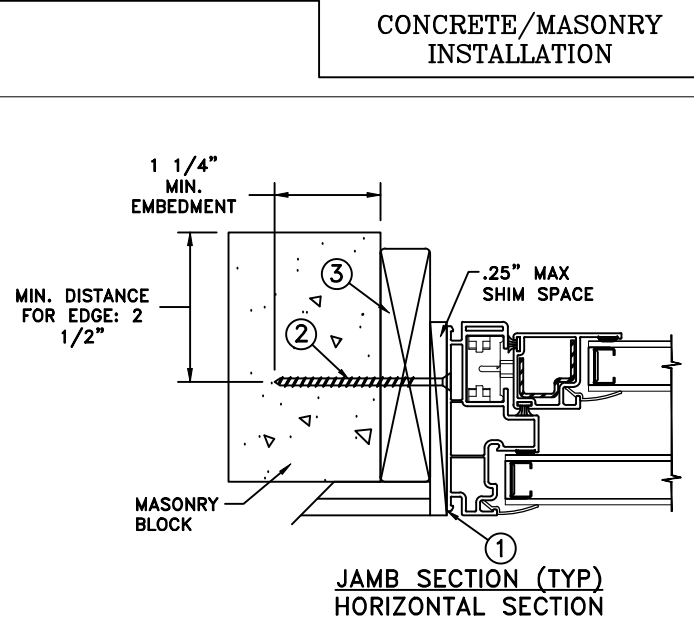
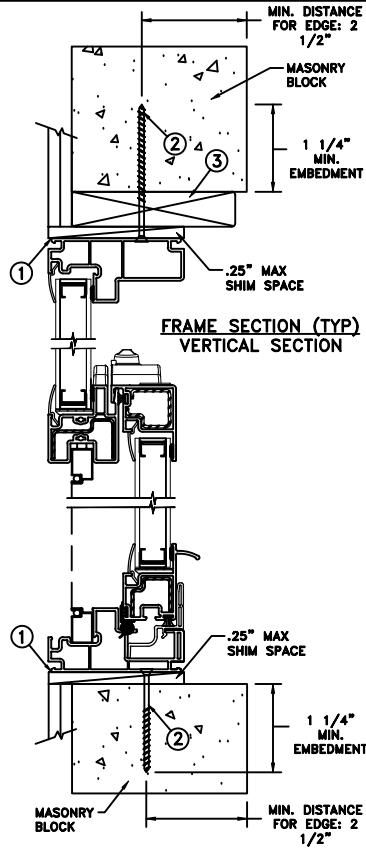
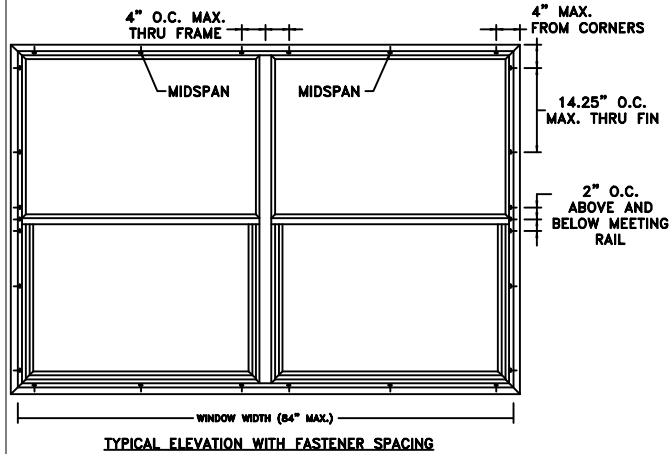
This schedule addresses only the fasteners required to anchor the unit to achieve the rated design pressure and impact performance (where applicable) up to the size limitations noted. It is not intended as a guide to the installation process and does not address the sealing consideration that may arise in different wall conditions. For the complete installation procedure, see the instructions packaged with the unit or go to www.jeld-wen.com.

DISCLAIMER:
This drawing and its contents are confidential and are not to be reproduced or copied in whole or in part or used or disclosed to others except as authorized by JELD-WEN Inc.



2021.02.03 08:15:29 -05'00'
JOSEPH A. REED, P.E.
Florida PE 58920, REG. No. 33474
National Certified Testing Laboratories
5 Leigh Drive, York, PA. 17406
(717) 846-1200

DATE: 01/21/21	JELD-WEN 3737 LAKEPORT BLVD. KLAMATH FALLS OR, 97601 PHONE: (800) 535-3936		
DRAWN BY: T. BROOKS			
CHECKED BY: J. GOOSEN	BUILDERS VINYL TILT SINGLE HUNG TWO WIDE		
APPROVED BY: J. GOOSEN			
RECORD No.: D008450			
REPORT No.: SJW2012-184/185	CAD DWG. No.: ---	REV: A	SHEET 2 of 4



MAXIMUM FRAME	DP	IMPACT
84 x 57	+50/-50	NO

Installation Notes:

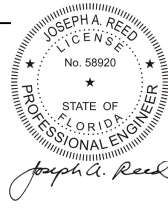
1. Seal flange/frame to substrate.
2. Use 3/16" Tapcon or equivalent fasteners through frame with sufficient length to penetrate a minimum of 1 1/4" into the masonry at each location with a 2 1/2" min from edge distance (min. = 3000psi).
3. Host structure (wood buck, masonry, steel) to be designed and anchored to properly transfer all loads to the structure. The host structure is the responsibility of the architect or engineer of record for the project of installation.

General Notes:

1. The product shown herein is designed, tested and manufactured to comply with the wind load criteria of the adopted International Building Code (IBC), the International Residential Code (IRC), the Florida Building Code (FBC) and the industry requirement for the stated conditions.
2. All glazing shall conform to ASTM E1300.
3. At minimum, glazing shall be single strength annealed insulating glass.
4. Use structural or composite shims where required.
5. Maximum sizes are buck sizes and do not include fin or flange.

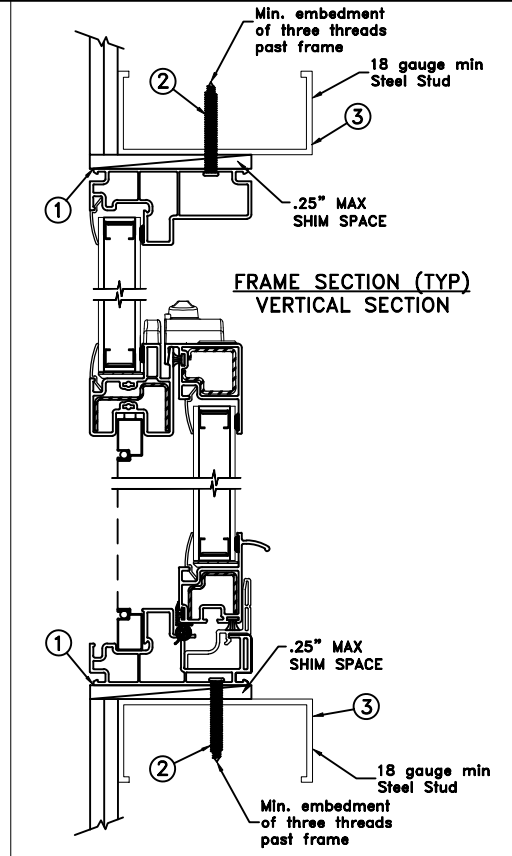
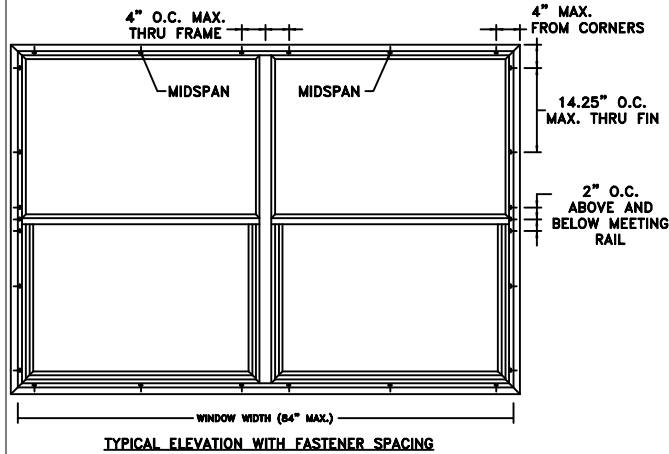
This schedule addresses only the fasteners required to anchor the unit to achieve the rated design pressure and impact performance (where applicable) up to the size limitations noted. It is not intended as a guide to the installation process and does not address the sealing consideration that may arise in different wall conditions. For the complete installation procedure, see the instructions packaged with the unit or go to www.jeld-wen.com.

DISCLAIMER:
This drawing and its contents are confidential and are not to be reproduced or copied in whole or in part or used or disclosed to others except as authorized by JELD-WEN Inc.

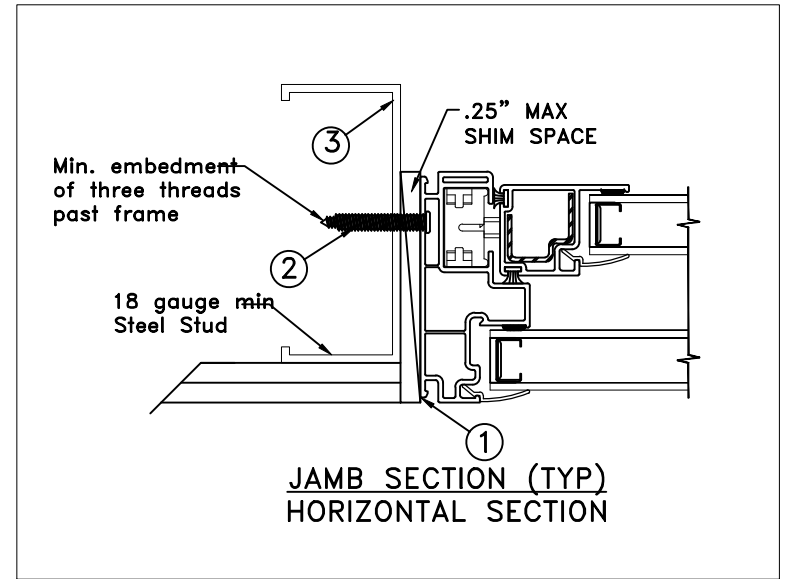


2021.02.03 08:15:29 -05'00'
JOSEPH A. REED, P.E.
Florida PE 58920, REG. No. 33474
National Certified Testing Laboratories
5 Leigh Drive, York, PA. 17406
(717) 846-1200

DATE: 01/21/21	<p>3737 LAKEPORT BLVD. KLAMATH FALLS OR, 97601 PHONE: (800) 535-3936</p>		
DRAWN BY: T. BROOKS		SCALE: NTS	
CHECKED BY: J. GOOSEN		TITLE: Builders Vinyl Tilt Single Hung Two Wide	
APPROVED BY: J. GOOSEN			
RECORD No.: D008450			
REPORT No.: SJW2012-184/185	CAD DWG. No.: ---	REV: A	SHEET 3 of 4



STEEL INSTALLATION



MAXIMUM FRAME	DP	IMPACT
84 x 57	+50/-50	NO

Installation Notes:

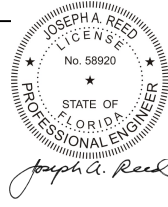
1. Seal flange/frame to substrate.
2. For anchoring into metal framing, use #8 TEK Self Tapping screws with sufficient length to achieve a minimum embedment of three threads past the frame thickness. Locate anchors as shown in elevations and installation details. Steel substrate min. 18ga., fy = 33 ksi.
3. Host structure (wood buck, masonry, steel) to be designed and anchored to properly transfer all loads to the structure. The host structure is the responsibility of the architect or engineer of record for the project of installation.

General Notes:

1. The product shown herein is designed, tested and manufactured to comply with the wind load criteria of the adopted International Building Code (IBC), the International Residential Code (IRC), the Florida Building Code (FBC) and the industry requirement for the stated conditions.
2. All glazing shall conform to ASTM E1300.
3. At minimum, glazing shall be single strength annealed insulating glass.
4. Use structural or composite shims where required.
5. Maximum sizes are buck sizes and do not include fin or flange.

This schedule addresses only the fasteners required to anchor the unit to achieve the rated design pressure and impact performance (where applicable) up to the size limitations noted. It is not intended as a guide to the installation process and does not address the sealing consideration that may arise in different wall conditions. For the complete installation procedure, see the instructions packaged with the unit or go to www.jeld-wen.com.

DISCLAIMER:
This drawing and its contents are confidential and are not to be reproduced or copied in whole or in part or used or disclosed to others except as authorized by JELD-WEN Inc.



2021.02.03 08:15:29 -05'00'
JOSEPH A. REED, P.E.
Florida PE 58920, REG. No. 33474
National Certified Testing Laboratories
5 Leigh Drive, York, PA. 17406
(717) 846-1200

DATE: 01/21/21	<p>3737 LAKEPORT BLVD. KLAMATH FALLS OR, 97601 PHONE: (800) 535-3936</p>		
DRAWN BY: T. BROOKS		SCALE: NTS	
CHECKED BY: J. GOOSEN		TITLE: Builders Vinyl Tilt Single Hung Two Wide	
APPROVED BY: J. GOOSEN			
RECORD No.: D008450			
REPORT No.: SJW2012-184/185	CAD DWG. No.: ---	REV: A	SHEET 4 of 4